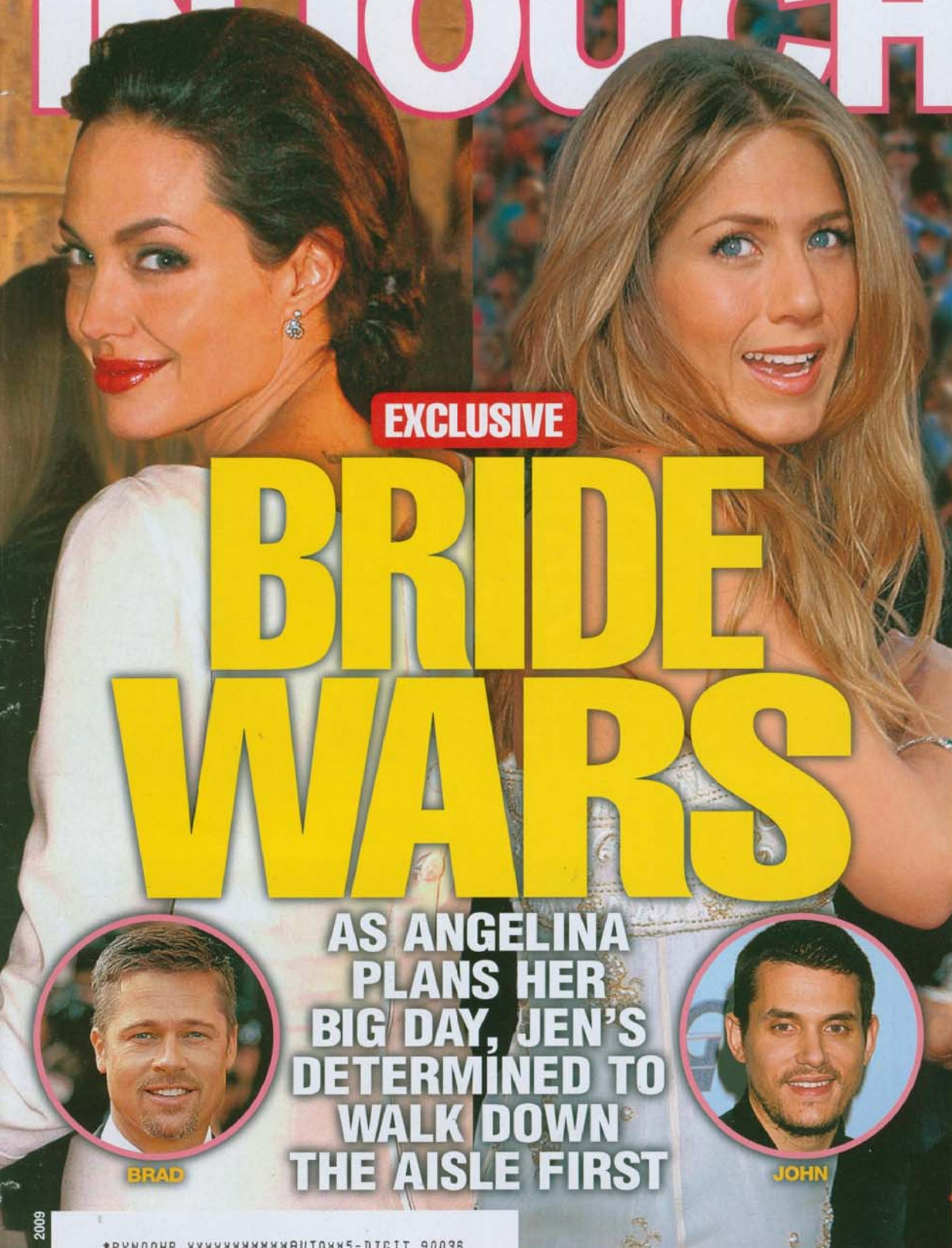


# WEEKLY INTOUCH



**IS OPRAH  
GETTING  
TOO CLOSE  
TO OBAMA?**



**EXCLUSIVE**

# BRIDE WARS

**AS ANGELINA  
PLANS HER  
BIG DAY, JEN'S  
DETERMINED TO  
WALK DOWN  
THE AISLE FIRST**



**BRAD**



**JOHN**

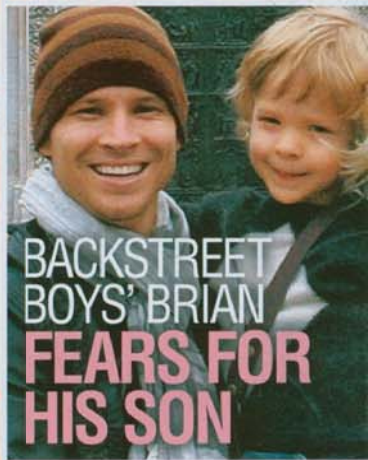


**THEN**



**NOW**

**TORI'S  
AMAZING  
POST-BABY  
SLIMDOWN**



**BACKSTREET  
BOYS' BRIAN  
FEARS FOR  
HIS SON**

IN TOUCH 02 • JANUARY 12, 2009

#BXNDQHB XXXXXXXXXXXXAUTOM5-DIGIT 90036  
#90038LFL919SR005# 070609 INTC 319 40839



LINDSAY LEFLER P0039  
DISTINCTIVE ASSETS 000:2  
913 S MANSFIELD AVE  
LOS ANGELES CA 90038-4921

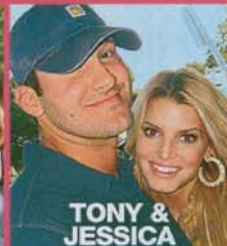
**PLUS:  
WEDDINGS IN  
2009**



**FERGIE &  
JOSH**



**JUSTIN &  
JESSICA**



**TONY &  
JESSICA**





FAITH HILL

# Stars' stylish SERVINGS



Slimware's portion-control plates aren't just pretty, they're helping celebs stick to their New Year's diet resolutions! Disguised in the design of each plate are eye-catching patterns that function as a guide to healthy serving sizes. **Kristin Chenoweth, Jennie Garth and Rene Russo** all chose the leopard-print style, while **Faith Hill** ordered two sets of both Urban Safari and Sunburst. \$40, slimware.com.

## REESE'S CLOTHES HELP HER RUN SMARTER

Having a personal trainer by your side is a nice luxury, but stars like **Reese Witherspoon** are relying on Rese Pilates Activewear to help maintain perfect form. This "smart" clothing line contains panels to show where to draw the navel to the spine and stripes to help keep hips aligned. **Eva Longoria Parker** and *Ugly Betty's* **Ana Ortiz** are also fans of the workout wear. \$48-\$100, resepilates.com.



REESE WITHERSPOON

## Gourmet meals to go

You don't need to have a personal chef to get a healthy, tasty custom-diet program! Nu-Kitchen, a favorite meal source for stars like **Sarah Jessica Parker** and **Molly Sims**, has expanded from its New York City base to go national in 2009 — so everyone across the country can get good-for-you gourmet meals delivered to their doorsteps!

\$239-\$1,260 per month, nu-kitchen.com.



SARAH JESSICA PARKER

CLOCKWISE FROM TOP: LEFT: RD/PEACHEY/REINA DIGITAL; COURTESY OF SLIMWARE; (2); X17/ONLINE; COURTESY OF REESE ACTIVWEAR; COURTESY OF NU KITCHEN; CLARK SAMUELS/STARTRAKSPHOTO